

Fitting Instructions

Revo Intake Upgrade Kit 2.0 S1

Fitting Difficulty



Dealer Fit Recommended

Contents

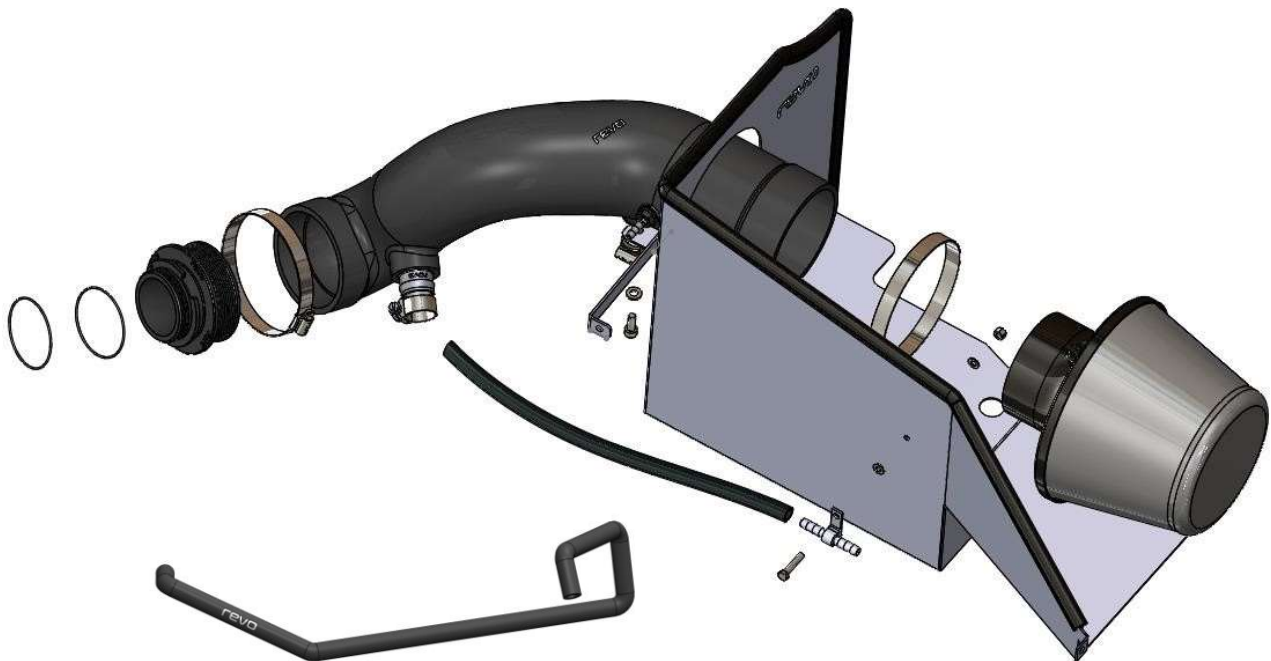
Description	Quantity
Revo Intake Pipe	1
Revo Air Filter	1
Revo Vacuum Hose	1
Revo Heatshield	1
Bracket	1
Machined Turbo Inlet	1
Vacuum Connector	1
M6x16 Cap Head Bolt	1
M6 Flat Washer	1
M4x16 Hex Head Bolt	1
M4 Flat Washer	2
M4 Nylock Nut	1
90-110 Hose Clamp	1
70-90 Hose Clamp	1
25-40 Hose Clamp	1
25-35 Hose Clamp	1
Coolant Hose	1
Coolant Caps	2

Recommended Tools

Tools	Size
Ratchet	
Extension	
Socket	7, 10mm
Torx Bits	T25
Hex Key	5mm
Flat Head Screwdriver	
Constant Tension Pliers	



Before starting, please ensure that the battery is disconnected and you have ensured the engine is cool. Engine temperatures can remain high for a substantial amount of time after use.



Fitting Instructions

Revo Intake Upgrade Kit 2.0 S1

Fitting Difficulty



Dealer Fit Recommended

- 1 Remove the OE intake pipe, then disconnect the vacuum line from the airbox.



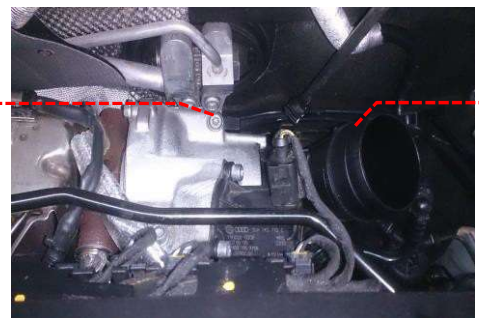
- 2 Pull the airbox upwards to detach from the rubber mounts. In the bottom of the airbox there are 4 x rubber grommets. Gently remove the 3 highlighted grommets from the airbox. Set aside, they will be reused later.



- 3 Using a T25 socket, remove the 2 x bolts that secure the front air intake. Keep the bolts as they will be reused later.



- 4 Using a T30 socket remove the bolt shown. Twist the turbo inlet elbow and remove from the turbo.



Fitting Instructions

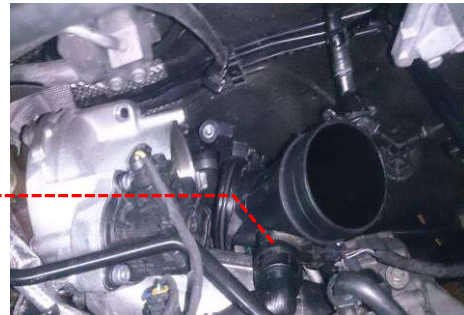
Revo Intake Upgrade Kit 2.0 S1

Fitting Difficulty



Dealer Fit Recommended

- 5 Disconnect the breather pipe.



- 6 Ensure the vehicle coolant is cold. Remove the coolant reservoir cap slowly to relieve any pressure left in the coolant system. Loosen the hose clamp and disconnect the OE hose from the metal hard pipe in the area shown. Insert the cap (supplied) over the metal pipe and repeat at the radiator pipe end.

Note: a very small amount of coolant will leak from the metal pipe and OE hose.



- 7 Remove the plastic check valve from the OE hose. Take note of the orientation of the check valve in the hose, it will need to be installed into the Revo hose in the same configuration.

Note: It may be possible to remove the check valve by clamping behind the valve location with pliers and moving the hose to slowly dislodge the valve, to allow the OE hose to be reused. If the OE hose can be discarded, cut the hose to remove the check valve.



- 8 Clean and lightly grease the exterior of the check valve. Spray a small amount of lubricant inside the end of the Revo hose, as shown. Insert the check valve into the Revo hose, ensuring it is installed in the same orientation as the OE hose. Ensure the check valve stops at the approximate position, as shown, inside the Revo hose.



Fitting Instructions

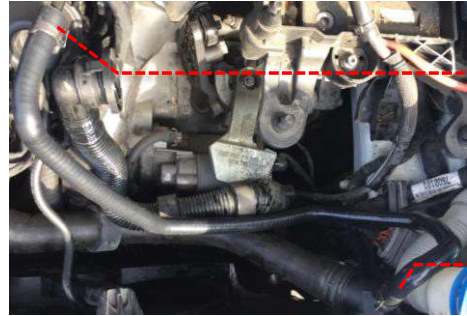
Revo Intake Upgrade Kit 2.0 S1

Fitting Difficulty

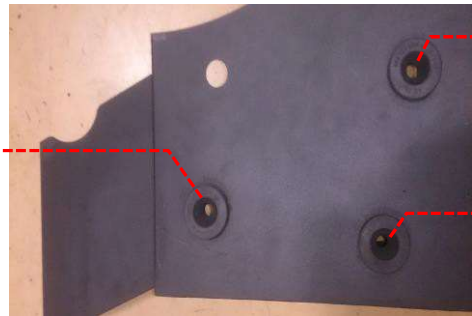


Dealer Fit Recommended

- 9 Slip the OE hose clamps onto each end of the Revo hose. Install the hose as shown, starting with the radiator side. The hose should be oriented in a similar way to the picture.



- 10 Insert the grommets, removed from the OE airbox in step 2, into the holes at the bottom of the Revo heatshield, as shown.



- 11 Using 2 x M5 washers, a M5x15mm bolt and a M5 nylock nut screw the vacuum connector to the side panel of the Revo headshield, as shown.



- 12 Secure the Revo heatshield in the OE airbox mounting grommets by pushing down into place. Use one of the T25 torx bolts from step 3 to secure the front of the heatshield in the position of the OE air intake.



Fitting Instructions

Revo Intake Upgrade Kit 2.0 S1

Fitting Difficulty

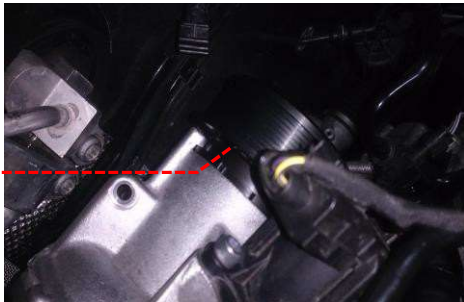


Dealer Fit Recommended

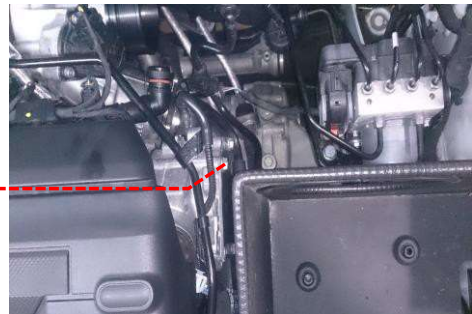
- 13 Connect the OE vacuum line to the vacuum connector in the side panel of the Revo heatshield.



- 14 Install the Revo machined adapter into the turbo inlet. The Revo logo should face the turbo. Screw the adapter clockwise for 30° to 40° until it is secured.



- 15 Using a 10mm socket remove the bolt, shown, from the engine. Set aside, the bolt will be reused later.



- 16 Using the 25-35 and 25-40 hose clamps secure the two small outlets onto the Revo intake hose. Loosely attach the 70-90 hose clamp on the turbo end of the hose.



Fitting Instructions

Revo Intake Upgrade Kit 2.0 S1

Fitting Difficulty

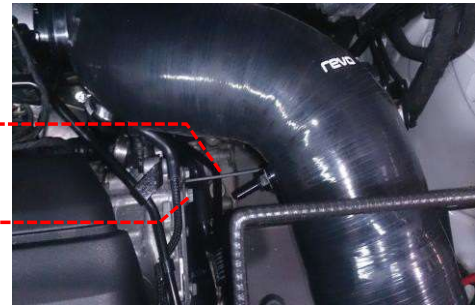


Dealer Fit Recommended

- 17 Fit the Revo intake hose to the new turbo machined adapter, but do not fully tighten yet, then reattach the breather pipe to the outlet on the hose by pushing it on until it clicks.



- 18 Using a 5mm hex key install the bracket to the Revo intake hose using the M6x12mm bolt and washer. With a 10mm socket refit the bolt from step 15 to secure the Revo bracket. Once everything is lined up on the bracket, tighten the hose clamp at the turbo.



- 19 Connect the Revo vacuum hose from the connector to the intake hose. Install the Revo air filter using a 90-110 hose clamp. Check that all hose clamps are tight and that everything is attached correctly. Test drive the vehicle to ensure vehicle performs correctly and there are no leaks/part interference during operation. Your installation is now complete!

